



DO SOMETHING GREAT

2024 VISITOR GUIDE

## HISTORICAL SITES

Establishments from the Gold Rush, which attracted settlers and prospectors in the mid-1800s, have been preserved and restored, allowing visitors to immerse themselves in the region's history and heritage. Jacksonville Inn offers Victorian-era furnishings in a renovated space. Bell Sister Flats in Roseburg is a former dress and hat shop from the early 1900s turned hotel. The restored Ashland Springs Hotel has been a prominent landmark in downtown Ashland since 1925. Nearby, The Peerless Hotel offers a romantic boutique stay with 18th- and 19th-century antiques. At Lithia Springs Resort and its Waterstone Spa in Ashland, experience healing hot springs surrounded by a lush garden near a restored 19th-century farmhouse. Kubli Haus in Jacksonville was renovated in 2021 by a build and design couple who kept the original structure while modernizing the five suites. For an unforgettable experience, stay at the historic Crater Lake Lodge perched above the deepest lake in the United States. The 1915 lodge is open seasonally from May to October and requires early reservations.

## INNS AND B&BS

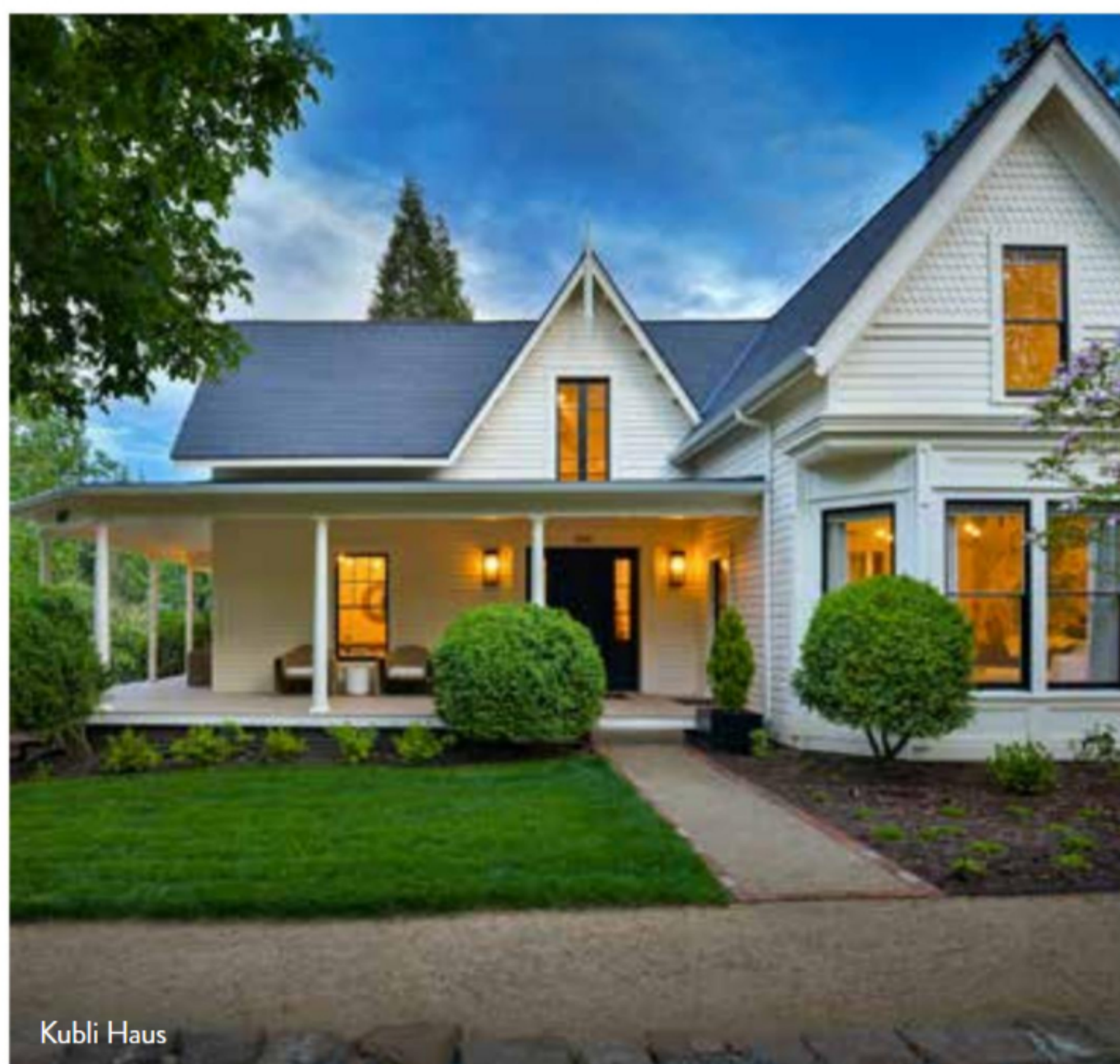
For relaxation, inspired by surrounding land and history, stay at one of Southern Oregon's numerous inns. Hummingbird Estate in Central Point is an English-style cottage located on a beautiful vineyard complete with a tasting room to sample delicious wines and bites. In the forests by the Upper Rogue River, Prospect Historic Hotel was built in 1889 and continues to serve guests meals and provide comfortable lodging. In Roseburg, The C.H. Bailey House Bed & Breakfast can be found on a 50-acre tree farm in the Umpqua Valley surrounded by gardens. In Ashland, numerous inns dot the streets of downtown: Stratford Inn, the Coolidge House and Ashland Creek Inn are a few. The boutique Country Willows Inn & Estate is a bed and breakfast featuring a heated pool on five acres of land.

## RANCH STAYS

Book a stay at one of Southern Oregon's many ranches for a rustic, outdoorsy ambiance. The Lonesome Duck Ranch offers fishing on the Williamson River and a peaceful, private environment. Running Y Ranch in Klamath Falls is a golf and spa resort with hotel or vacation rentals. The resort offers hiking and biking trails, ice skating, spa services and preferred tee times at the golf course. Willow-Witt Ranch in Ashland offers farm-stay accommodations and an agritourism experience with tent, studio and house accommodations.



Lithia Springs Resort



Kubli Haus



The Lonesome Duck Ranch